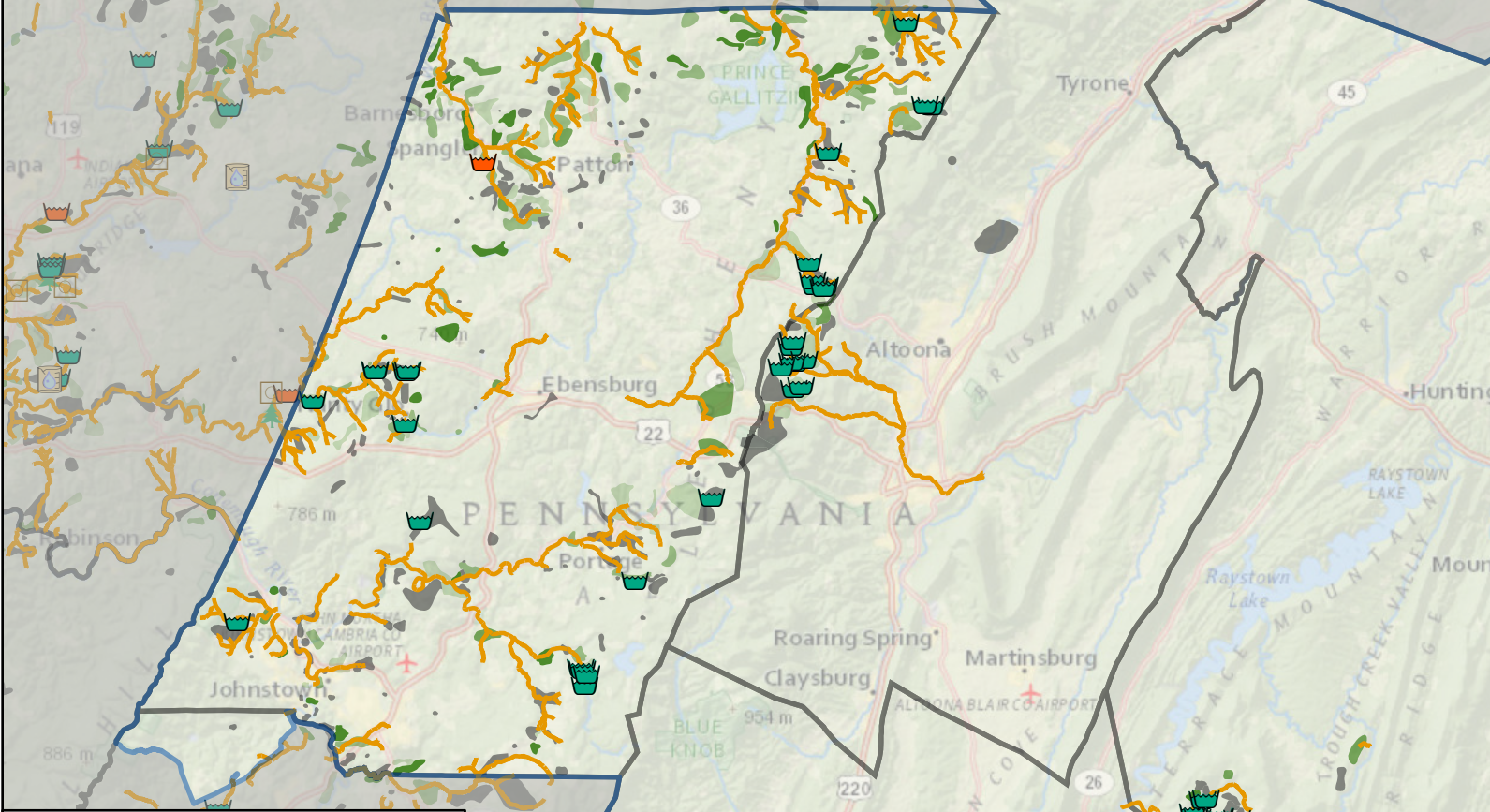
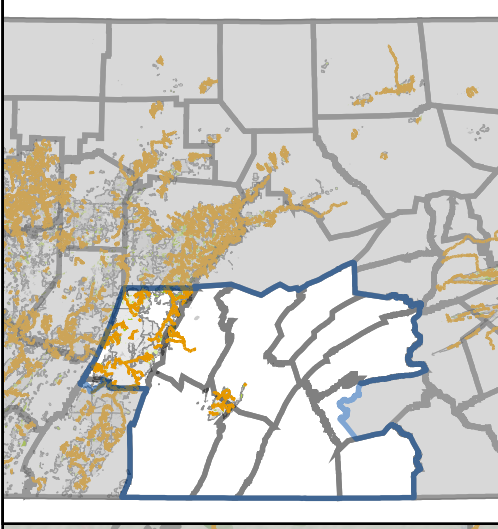


ABANDONED MINE ISSUES IN PA CONGRESSIONAL DISTRICT 13



Legislative District
 13
 Outside District

AMD Treatment Type

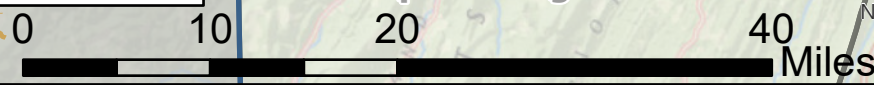
- Active Treatment System (6)
- Land Reclamation (4)
- Passive Treatment System (140)
- Site Assessment and Restoration Plan; Site Assessment & Restoration Plan (4)

AML Sites (DEP AMLIS)

- Unreclaimed
- 1 to 25% Reclaimed
- 26 to 50% Reclaimed
- 51 to 75% Reclaimed
- 76 to 100% Reclaimed

Stream; Stream Monitoring (7)
 Stream; Stream Monitoring (7)
 Other (1)
 AMD Impacted Streams

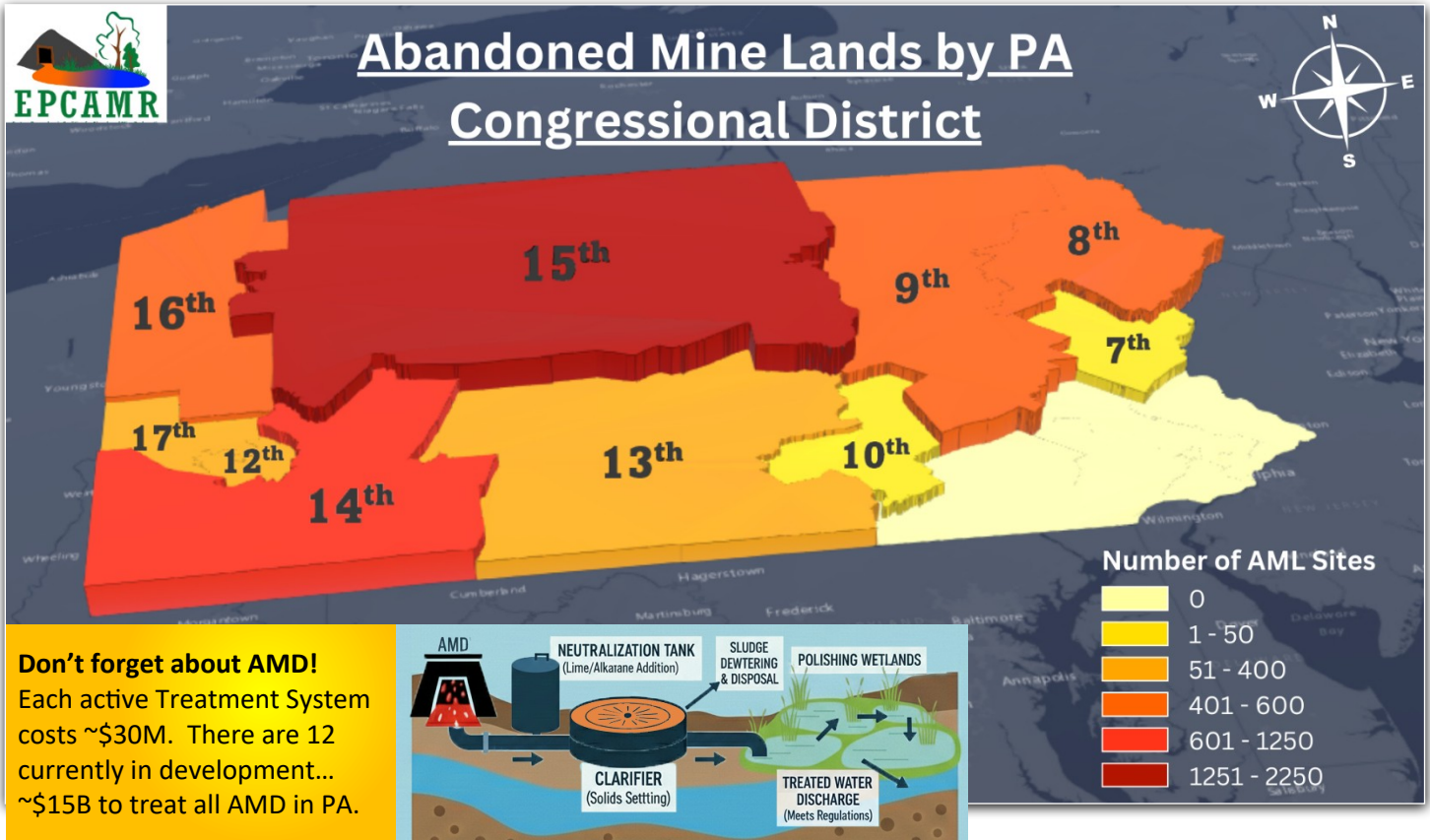
**Map created 03/2026
 by Michael Hewitt,
 EPCAMR Program Manager
www.epcamr.org**



District 13 Inventory '26	AML Sites	Features	% AML Features	Acres*
Unreclaimed	382	1,687	73.7%	6,372
Reclaimed	10	602	26.3%	3,738
Active	2			
Total	394	2,289		10,110

Individual features include site conditions like open mine shafts, waste coal piles, strip mine pits, subsidence prone areas, contaminated mine water discharges, and etc. Sites were abandoned prior to the passage of the Surface Mining Control and Reclamation act of 1977. Active status refers to re-mining of the site.

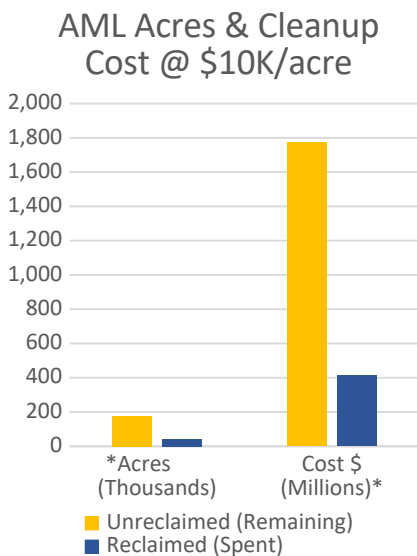
AMD Impaired Streams ‡ 384 miles



Don't forget about AMD!
Each active Treatment System costs ~\$30M. There are 12 currently in development... ~\$15B to treat all AMD in PA.

More than 2 dozen coal states & tribes need continued support & increases of federal funds:

1. AML Trust Fund – Fee per ton of coal (reduced again). Coal sells at \$40-200/ton.
 - Only 22.4¢ surface, 9.6¢ underground, & 8¢ lignite, a 0.6%, 0.2%, & 0.2% fee...
2. AMLER – \$130M/yr for cleanup & economic revitalization in hardest hit states.
3. IJA – Provides ~\$11 Billion to address safety hazards & AMD in all coal states.



Statewide PA Inventory '26	AML Sites	Features	% of AML Features	Acres*
Unreclaimed	5,320	27,859	79.3%	177,205
Reclaimed	253	7,286	20.7%	41,119
Active	19			
Total	5,592	35,145		218,324

AMD Impaired Streams ‡ 5,663 miles

Delisted Streams '24-'26 17 miles

*These are conservative acreage estimates: AML Feature Polygon GIS layer was projected from GCS North American 1983 to USA Contiguous Albers Equal Area Conic to preserve area and does not include a count of AML Feature Points. Source: 01/2026 AMLIS Inventory by PA DEP Bureau of Abandoned Mine Reclamation (BAMR) updated quarterly.

‡ AMD stream miles. Source: 2026 Pennsylvania Integrated Water Quality Report: Clean Water Act Section 303(d) List and 305(b) Report created by PA DEP Water Quality Division (WQD) biannually.